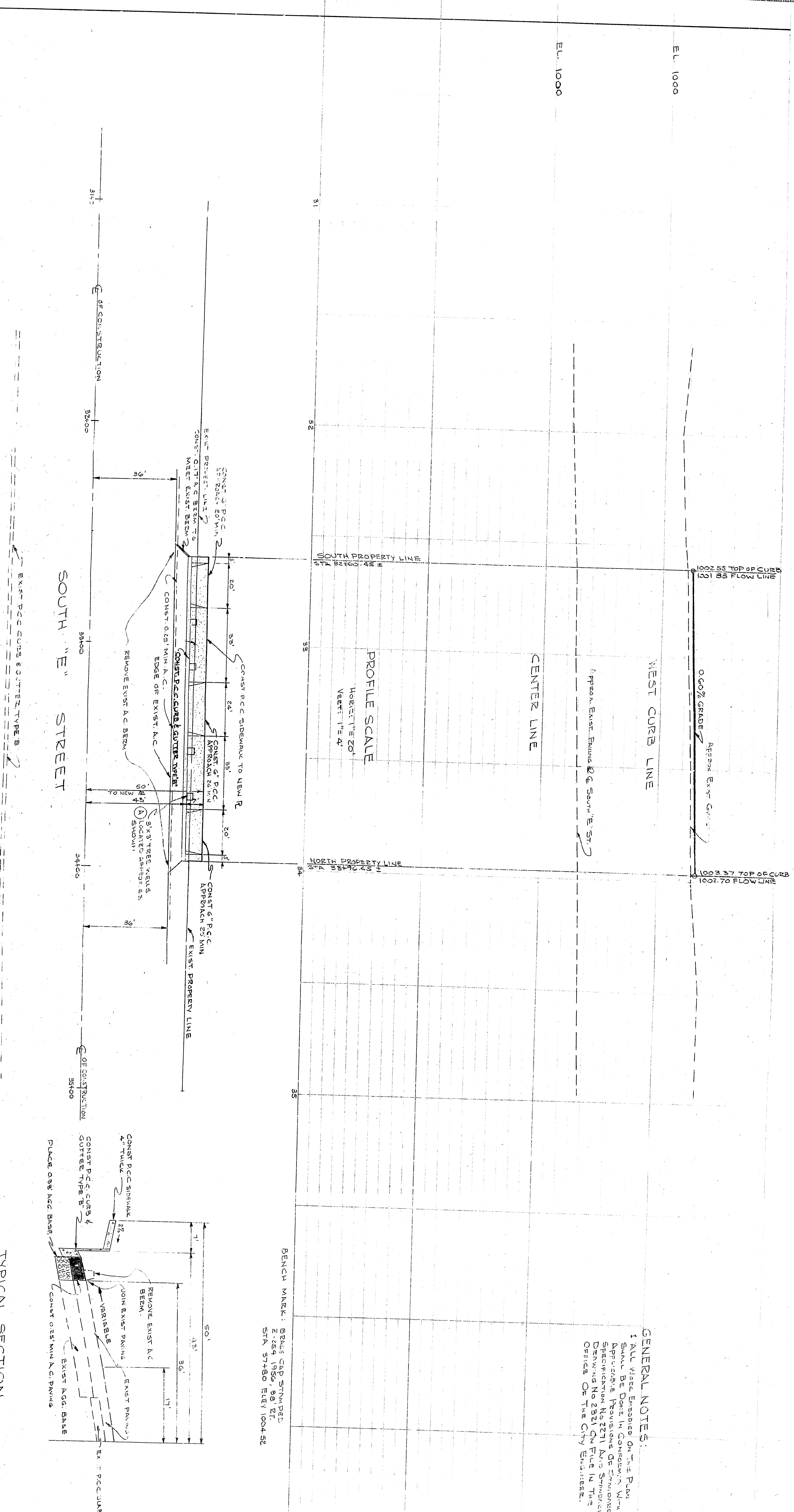


PLAN  
SCALE: 1" = 20'



TYPICAL SECTION  
SCALE: NONE

GENERAL NOTES:  
1. ALL WORK EXCEPT ON THIS PLAN SHALL BE DONE IN ACCORDANCE WITH THE PROVISIONS OF THE STANDARD SPECIFICATIONS FOR HIGHWAY CONSTRUCTION, 1965 EDITION, AS AMENDED BY THE CITY ENGINEER.

APPROVED	6-10-66	REVISION	1-2-66
CITY ENGINEER	<i>[Signature]</i>	CITY ENGINEER	<i>[Signature]</i>
REGISTERED CIVIL ENGINEER, 1966		REGISTERED CIVIL ENGINEER, 1966	
DESIGNED BY		CHECKED BY	
DRAWN BY		DATE	
PROJECT NO.		PROJECT NAME	
SHEET NO.	1	TOTAL SHEETS	1
CITY OF SAN BERNARDINO DEPARTMENT OF ENGINEERING IMPROVEMENT PLAN THE BANK OF CALIFORNIA FROM STA. 3160+00 TO STA. 3171+00 SOUTH 'E' STREET			